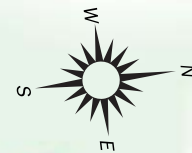


Carnfunnock Country Park

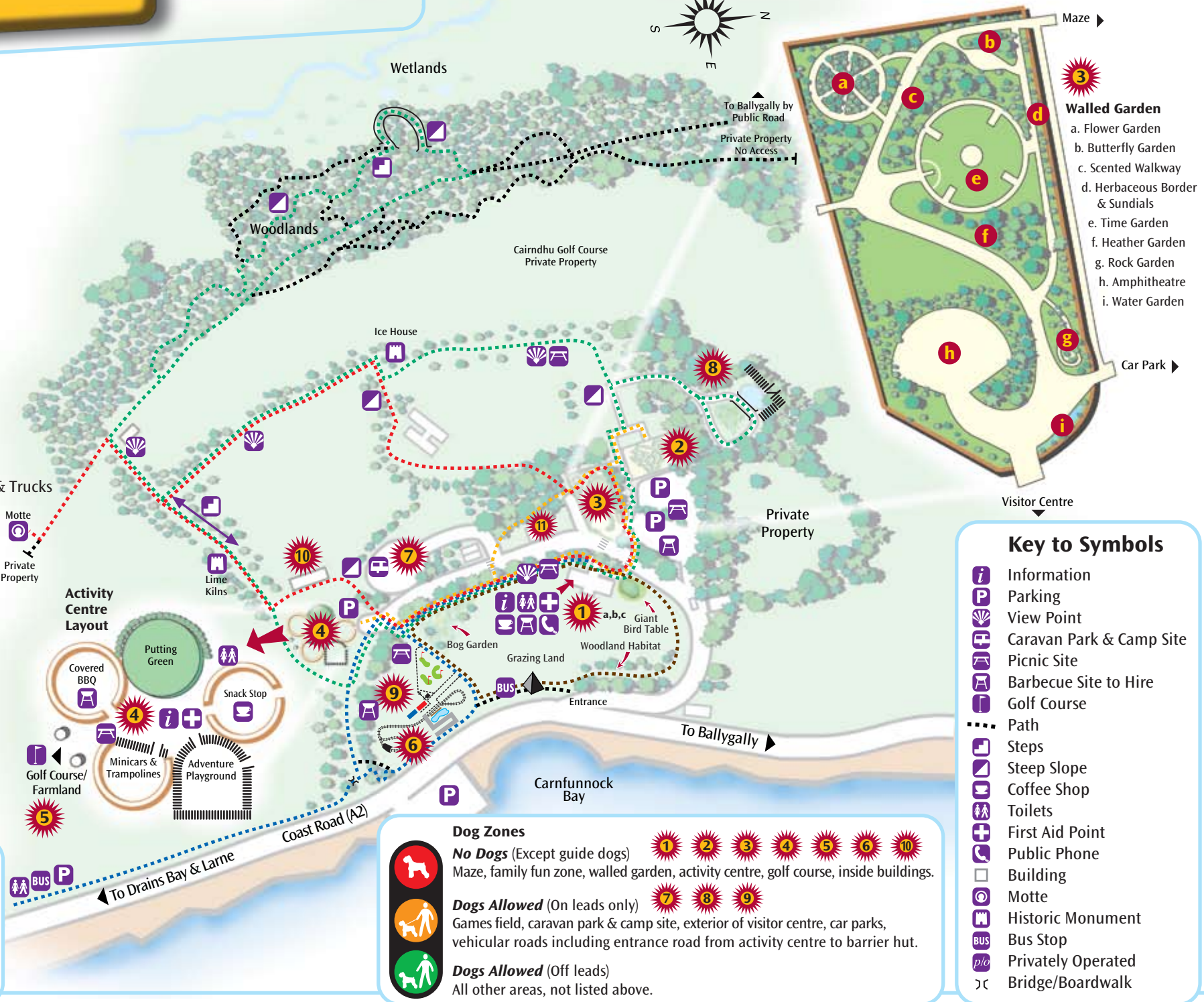


Key to Attractions

- 1a** Visitor Centre
- 1b** Coffee Shop *p/o*
- 1c** Education Centre
- 2** Maze
- 3** Walled Garden
- 4** Activity Centre including Facetastic and Snack Stop *p/o*
- 5** Golf Course
- 6** Family Fun Zone *p/o*
 - Miniature Railway
 - 18 Hole Mini Golf
 - Remote Control Boats & Trucks
 - Bouncy Castle
 - Bungee Run
 - Laser Clay Pigeon Shooting
- 7** Touring Caravan Park & Camp Site
- 8** Wildlife Garden
- 9** Games Field
- 10** Golf Driving Range & Academy *p/o*
- 11** Lions House *p/o* Holiday Home

Waymarked Trails

- Garden Trail
- Heritage Trail
- Shore Trail
- Woodland Trail
- Biodiversity/Fitness Trail



- ### Walled Garden
- a. Flower Garden
 - b. Butterfly Garden
 - c. Scented Walkway
 - d. Herbaceous Border & Sundials
 - e. Time Garden
 - f. Heather Garden
 - g. Rock Garden
 - h. Amphitheatre
 - i. Water Garden

Key to Symbols

- Information
- Parking
- View Point
- Caravan Park & Camp Site
- Picnic Site
- Barbecue Site to Hire
- Golf Course
- Path
- Steps
- Steep Slope
- Coffee Shop
- Toilets
- First Aid Point
- Public Phone
- Building
- Motte
- Historic Monument
- Bus Stop
- Privately Operated
- Bridge/Boardwalk

Dog Zones

- No Dogs** (Except guide dogs) Maze, family fun zone, walled garden, activity centre, golf course, inside buildings.
- Dogs Allowed** (On leads only) Games field, caravan park & camp site, exterior of visitor centre, car parks, vehicular roads including entrance road from activity centre to barrier hut.
- Dogs Allowed** (Off leads) All other areas, not listed above.